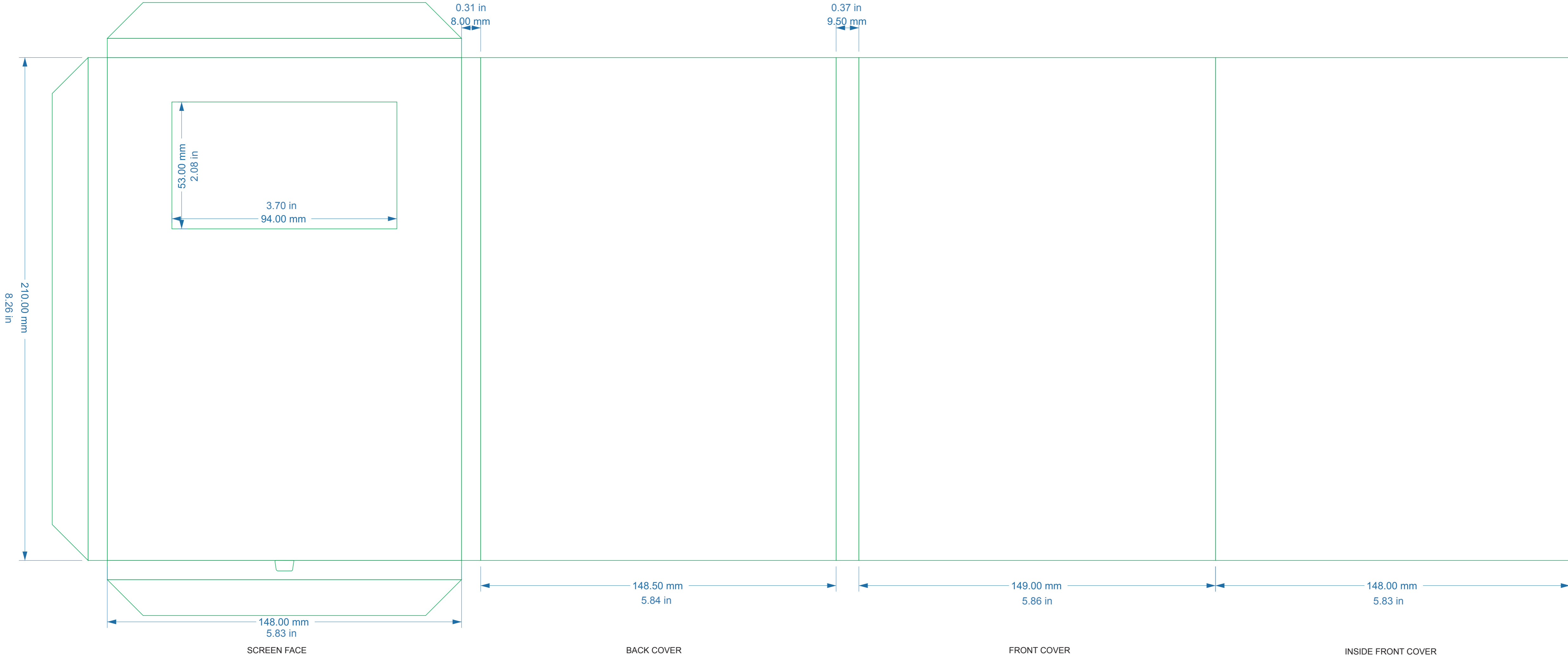


A5 4pp portrait brochure, 4.3" screen

Information to help you set up your artwork can be found here - <http://www.curveballprintedmedia.com/design/>



Production Guides – Video Brochures

To avoid delays to your project please ensure you understand how to set up artwork and supply to us. Supply files to us using the link on our website - <http://www.curveballprintedmedia.com/upload-artwork/> . If you have any questions please get in touch.

Artwork. When preparing artwork please follow these guidelines:

- Use artwork templates supplied by Curveball Print Media
 - **Ensure you have included Bleed**
 - o **Soft Cover** - Ensure ALL trimmed edges include minimum 5mm bleed
 - o **Hard Cover** – Ensure ALL trimmed/folded edges minimum 20mm bleed
 - **Buttons**
 - o Buttons require printed icons to be included in the artwork. You can place buttons vertically on the right of the screen OR horizontally underneath the screen
 - o Each button pressure pad is 10mm wide, please design your icon to this size
 - o Position each button at least 12mm away from screen edge and all trimmed edges
 - o Position each button at least 15mm away from each other (edge to edge)
 - o Each brochure can hold a maximum of 9 buttons
 - Files are supplied as CMYK unless previously specified and quote accordingly
 - Any spot UV/emboss/foil layers are set up as a spot colour, label and set to overprint. Supply low res pdf to show each additional layer
 - Images are supplied at 300dpi at the size they are placed in the artwork
 - All fonts are outlined
 - We accept print ready pdf files OR Illustrator files with all support files
 - When supplying print ready pdfs include files with and without template/cutter
 - All text and logos are vector based
 - For bespoke requirements (i.e. pockets, die cut shapes) include as a new layer and label as part of template/cutter
 - We litho print using single sided board. This means the reverse is white. Therefore the inner spine will be white. If you require 4/4 print, please speak to us to discuss
 - We recommend you produce a mock-up of your brochure from your own files prior to sending us final artwork.
-

Proofing

- PDF file supplied as print proof
- We can also supply images/movie of a digitally printed mock up for approval. Please note this is a digitally printed proof, so any special finishes, materials will not be shown.
- Proofing stage can take 1-3 days depending on the complexity of the project.
- An order confirmation is also sent with your proofs. Please read this, sign and return to us. **We cannot commence production without a signed order confirmation.**
- **Please note the client is responsible for final proof approval of all artwork and specifications. Approval can be sent to us as email. We cannot commence production without your approval of all proof files.**

Special requirements

- If you have a specific requirement for your video brochure, i.e. foiling, embossing/debossing, use of special materials, please talk to us about your brief and we can work with you to develop your idea within the production capabilities of these products.
- When supplying artwork with special printing requirements such as foil/spot UV/emboss etc, please set as a new layer in your artwork and label accordingly. Please also supply a page in your low res pdf showing this layer only.

Screen Functionality

- Allows auto play on opening via magnetic sensor, standard volume level and video plays continuously on loop until the cover is closed. If you require additional functionality buttons are required.

Buttons

- We recommend you include buttons if you:
 - o have multiple videos to view – please indicate video name/number
 - o pause/play video content - you do not wish the video to load and play automatically when the cover is opened
 - o wish to play/pause, rewind/fast forward video content

Video Content

- Video content is usually loaded during manufacture. However, you can load video content yourself. If you wish to do this, please send us your video file and we can format it correctly.
- Files can be uploaded once the unit is connected to a PC via a USB cable.
- **Once the video brochure is delivered you are responsible for loading / changing video content.**

Supply of Video content

- Files formats we can accept MP4/AVI/MOV
- Please check the aspect ratio and resolution for each screen size.
- Master your volume settings to the level you wish to hear.
- If supplying multiple video files, please label as per button menu, if applicable. Or, label in order you wish to load.

Security

- If you do not wish the user to remove existing content or upload new content, we can add a privacy button. This ensures the filing structure is locked. Please indicate this on your specification.

Loading Screen

- Content loading can take a few seconds, during this time the video screen is blank. We can load a static jpeg to appear during content load. Please indicate this on your specification.

Battery

- Please refer to our price list for battery information.

Charging

- Via USB cable connected to you PC. USB cables supplied as standard.
- All our brochures are supplied fully charged. During transit units can lose some charge, these will quickly re-charge once connected via USB cable to a power supply.
- If video brochure is stored, unused, battery will lose charge after approximately 6 weeks. We can supply units with a longer battery life. Please talk to us about your requirements.